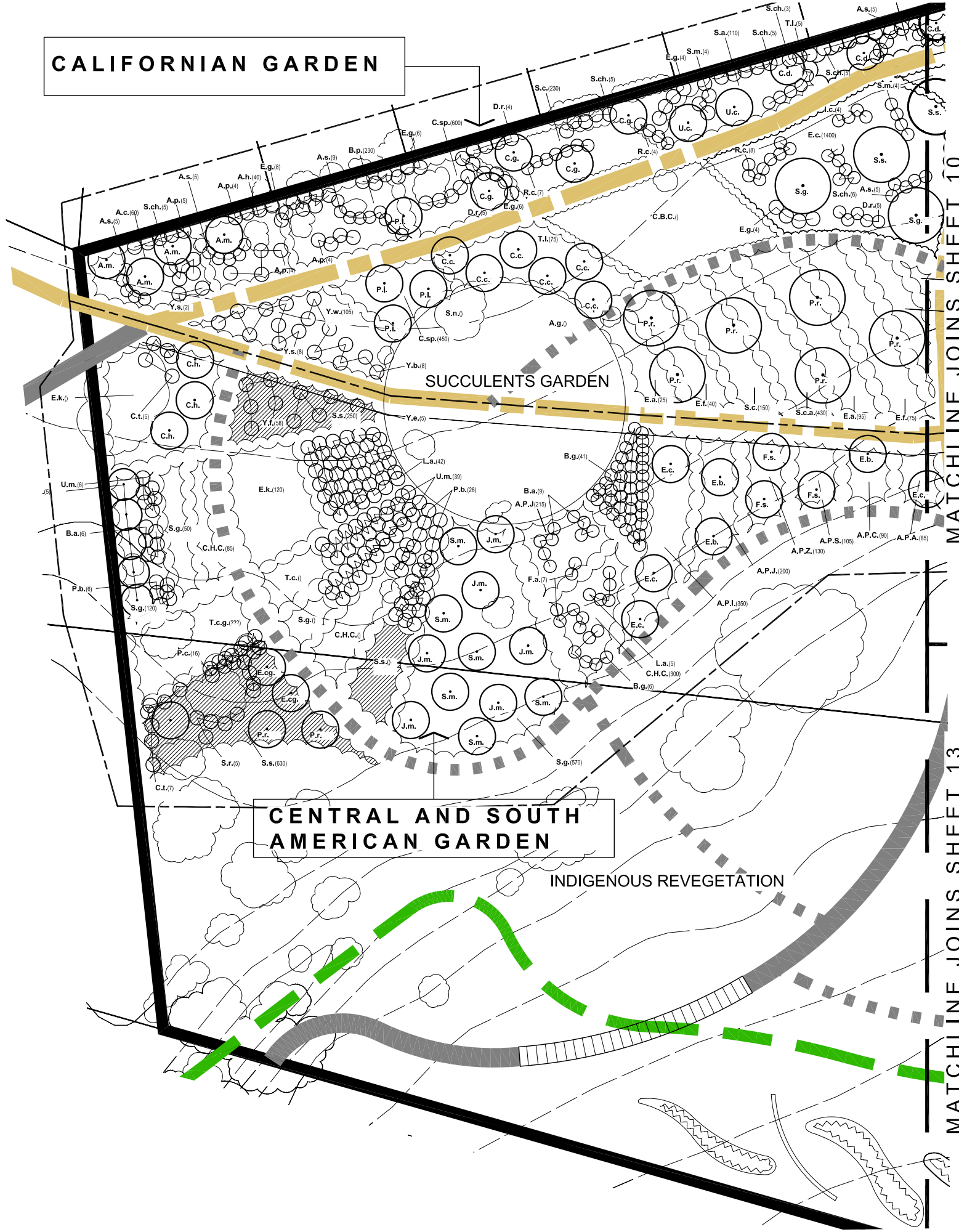


CALIFORNIAN GARDEN



PLANT SCHEDULE CENTRAL AND SOUTH AMERICAN GARDEN

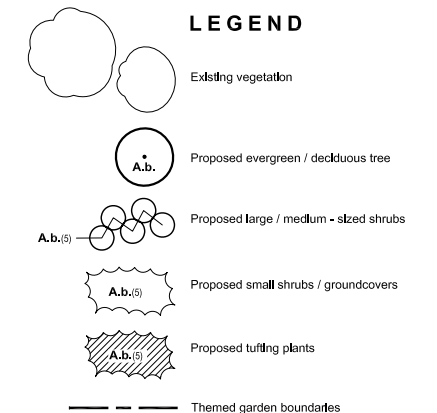
KEY	BOTANIC NAME	QTY.
A.P.A.	ALSTROEMERIA 'PRINCESS ANGELA'	85
A.P.C.	ALSTROEMERIA 'PRINCESS CAMILLA'	90
A.P.I.	ALSTROEMERIA 'PRINCESS IVANA'	350
A.P.J.	ALSTROEMERIA 'PRINCESS JULIETTA'	415
A.P.S.	ALSTROEMERIA 'PRINCESS SISSI'	105
A.P.Z.	ALSTROEMERIA 'PRINCESS ZAVINA'	130
B.g.	BUDDLEJA GLOBOSA	47
B.a.	BRAHEA ARMATA	15
C.H.C.	CALCEOLARIA HYBRID CULTIVAR	585
C.h.	CALLIANDRA HAEMATOCEPHALA	3
C.t.	CALLIANDRA TWEEDI	12
E.k.	ERIGERON KARVINSKIANUS	290
E.c.	EMBOTHRUM COCCINEUM	4
E.cg.	ERYTHRINA CRISTA-GALLI	2
E.b.	ESCALLONIA BIFIDA	3
F.a.	FUSCHIA ARBORESCENS	7
F.s.	FELIQA SELLOWIANA	3
J.m.	JACARANDA MMOSIFOLIA	6
L.a.	LUMA APICULATA	47
P.r.	PLUMERIA RUBRA	2
P.b.	PUYA BERTERONIANA	34
P.c.	PUYA CHILENSIS	16
S.g.	SALVIA GUARANTICA	840
S.m.	SCHINUS MOLLE	6
S.s.	SISYRINCHIUM STRIATUM	1010
S.r.	SYAGRUS ROMANZOFFIANA	5
T.c.	TILLANDSIA CYANEA	130
U.m.	UGNI MOLINAE	45
Y.e.	YUCCA ELEPHANTIPES	5
Y.f.	YUCCA FAXONIANA	58

PLANT SCHEDULE CALIFORNIAN GARDEN

KEY	BOTANIC NAME	QTY.
A.h.	ARCTOSTAPHYLOS HOOKERI	40
A.p.	ARCTOSTAPHYLOS PUNGENS	17
A.s.	ARCTOSTAPHYLOS STANFORDIANA	33
A.m.	ARBUTUS MENZIESII	4
A.c.	ARTEMESIA CALIFORNICA	60
B.p.	BACCHARIS PILULARIS	230
C.d.	CALOCEDRUS DECURRENS	7
C.Sp.	CALOCHORTUS SPECIES	1050
C.c.	CARPENTERIA CALIFORNICA	6
C.B.C.	CEANOTHUS 'BLUE CUSHION'	128
C.g.	CEANOTHUS GRISEUS 'YANKEE POINT'	4
D.r.	DENDROMECON RIGIDA	19
E.a.	ERIOGONUM ARBORESCENS	120
E.f.	ERIOGONUM FASCICULATUM	115
E.g.	ERIOGONUM GIGANTEUM	28
E.c.	ESCHSCHOLZIA CALIFORNICA	1400
I.c.	IDRIA COLUMNARIS	4
P.r.	PINUS RADIATA	6
P.I.	PRUNUS ILICIFOLIA	9
R.c.	ROMNEYA COULTERI	27
S.c.	SALVIA CLEVELANDII	460
S.m.	SALVIA MUNZII	14
S.a.	SALVIA APIANA	110
S.g.	SEQUIOIAENDRON GIGANTEUM	2
S.s.	SEQUIOIA SEMPERVIRENS	2
S.ch.	SIMMONDSIA CHINEISIS	30
S.ca.	SISYRINCHIUM CALIFORNICUM	448
T.L.	TAGETES LEMMONI	150
U.c.	UMBELLULARIA CALIFORNICA	2
Y.b.	YUCCA BREVIFOLIA	8
Y.w.	YUCCA WHIPPLEI	105
Y.s.	YUCCA SCHIDIGERA	10

PLANT SCHEDULE SUCCULENTS GARDEN

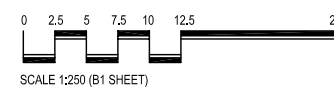
KEY	BOTANIC NAME
A.a.	AGAVE AMERICANA
A.am.	AGAVE ANGUSTIFOLIA VAR. MARGINATA
A.at.	AGAVE ATTENUATA
A.c.	AGAVE COLORATA
A.d.	AGAVE DESMETTIANA
A.f.	AGAVE FILIFERA
A.g.	AGAVE GEMINFLOA
A.gu.	AGAVE GUIENGOLA
A.gy.	AGAVE GYPSOPHYLLA
A.m.	AGAVE MACROACANTHA
A.p.	AGAVE PARRYI
A.t.	AGAVE TOUMEYANA
A.v.	AGAVE VICTORIA-REGINAE
E.a.	ECHVEERIA AGAVOIDES
E.e.	ECHVEERIA ELEGANS
E.g.	ECHVEERIA GLAUCA
E.I.	ECHVEERIA IMBRICATA
E.p.	ECHVEERIA PALLIDA
E.s.	ECHVEERIA SECUNDA
E.y.	ECHVEERIA YAMATOREM
S.n.	SEDUM NIVEUM



REFER TO LAYOUT PLANS FOR PATH AND FACILITY INFORMATION

FRAMEWORK PLANTING PLAN (SHEET 12 OF 15)

MELTON BOTANIC GARDEN
SHIRE OF MELTON



PRINT ISSUE: R. Thomas 18-02-09
Report 15-04-09

REVISIONS: REV A - 14-04-09

Drawn: M. B.

Date: 11-02-09



Michael Smith and Associates
Landscape Architecture and Urban Design
Office: 1st Floor, 407 Whitehorse Road, Balwyn, 3103
Postal: 5 Jervis Street, Camberwell, 3124
Tel: 9830 0414 Fax: 9830 2555

In association with:
Brecknock Consulting Pty Ltd
Practical Ecology Pty Ltd
Traffix Group Pty Ltd
Paoli Smith Pty Ltd